

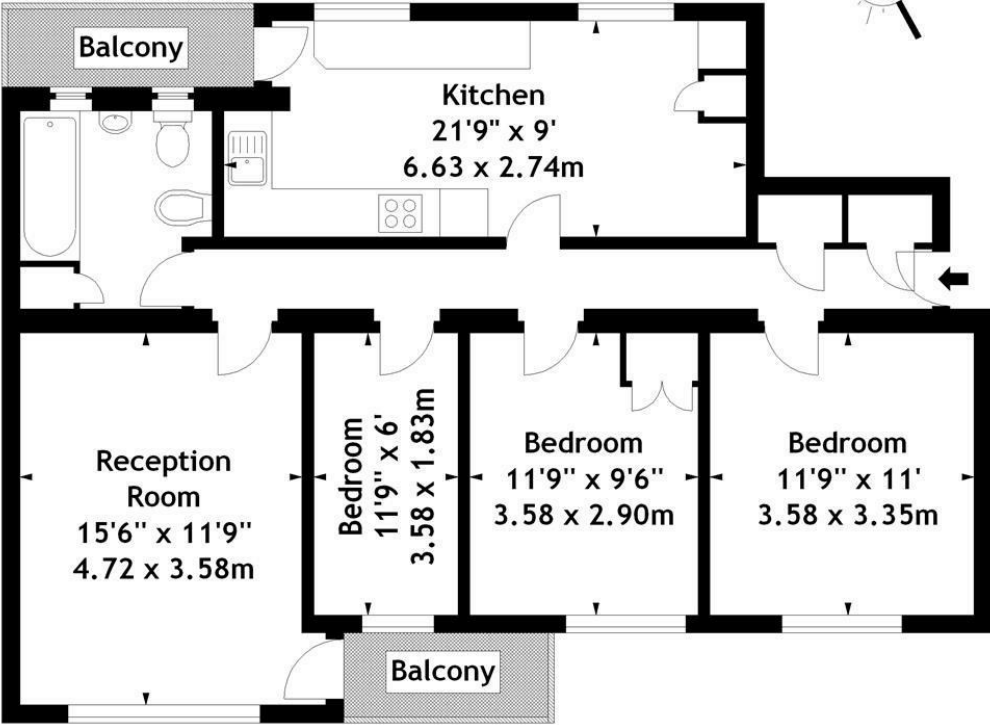
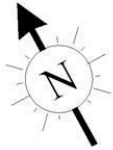


Boundary Road, St Johns Wood, NW8 £499,995 Subject to contract

In need of complete modernisation, this a great opportunity to live within a short stroll to the Boundary Road shops, bars, restaurants and the famous Abbey Road studios. The property is arrange as large reception with door to balcony, a separate eat in kitchen with further balcony, three good sized bedrooms and family bathroom. The apartment offers double glazing throughout and access to communal gardens. Close to Swiss Cottage (Jubilee Line), South Hampstead (Overground to Euston) and a short walk to Finchley Road (Metropolitan line) and the numerous Buses available from from Finchley Road and Swiss Cottage. The O2 centre, cinema complex and Supermarkets are within easy walk.



Boundary Road, NW8
Approx. Gross Internal Area *
913 Ft² - 84.82 M²



Fourth Floor

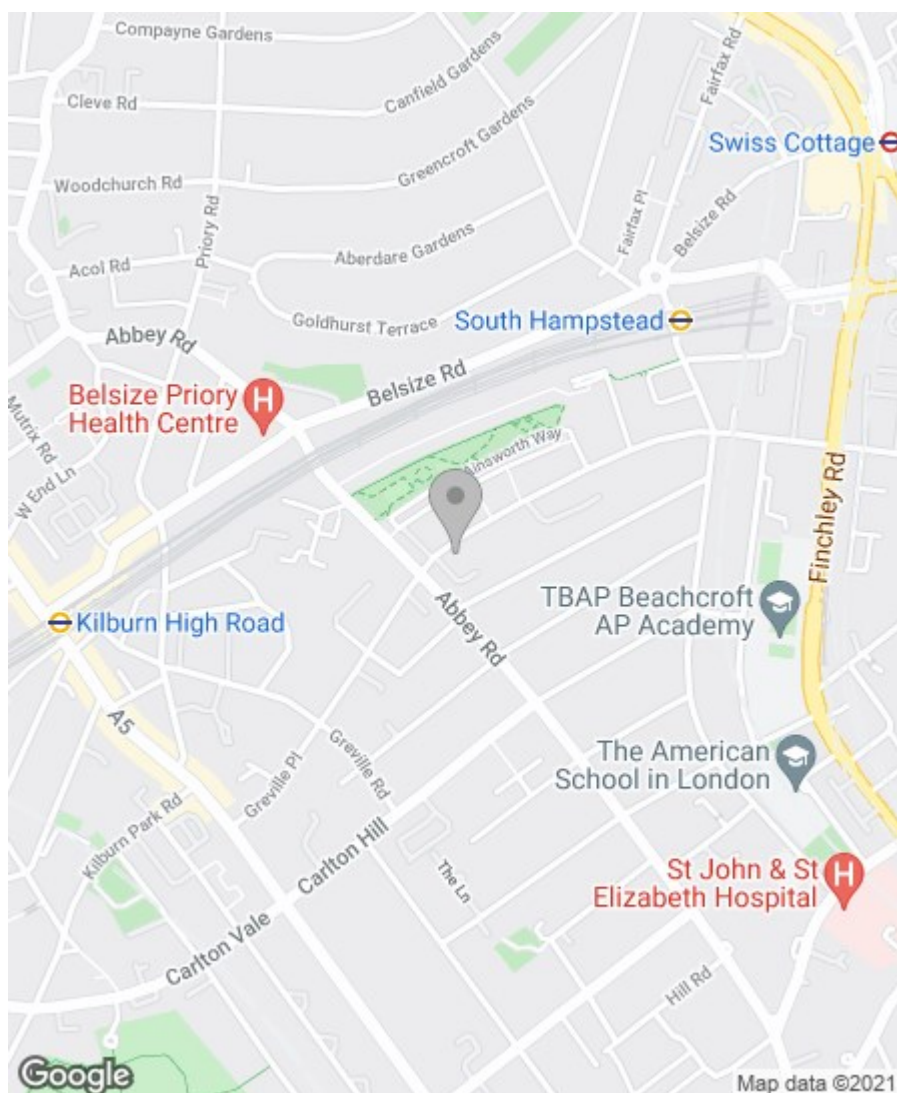
Illustration For Identification Purposes Only. Not To Scale
* As Defined by RICS - Code of Measuring Practice

Property Overview

Location	St Johns Wood, NW8
Price	Asking Price £499,995
Bedrooms	3
Bathrooms	1
Receptions	1
Tenure	Leasehold
Council	Camden
Tax Band	D
Current Ground Rent	Approx £10 Per Annum
Service Charge	Approx £1800 Per Annum
Term	Approx 90 Years Remaining

Key Features

- 3 Bedrooms
- Family Bathroom
- 2 Balconies
- Wooden Floors
- Double Glazing
- Communal Gardens
- Close to Transport Links
- Chain Free



Energy Efficiency Rating

	Current	Potential
Very energy efficient - lower running costs		
(92 plus) A		
(81-91) B		
(69-80) C		76
(55-68) D		
(39-54) E	50	
(21-38) F		
(1-20) G		
Not energy efficient - higher running costs		

England & Wales

EU Directive
2002/91/EC



Environmental Impact (CO₂) Rating

	Current	Potential
Very environmentally friendly - lower CO ₂ emissions		
(92 plus) A		
(81-91) B		
(69-80) C		
(55-68) D		60
(39-54) E	36	
(21-38) F		
(1-20) G		
Not environmentally friendly - higher CO ₂ emissions		

England & Wales

EU Directive
2002/91/EC



IMPORTANT NOTICE: All of the information is intended only as a guide to a prospective purchaser and does not constitute any part of an offer or contract. Any measurements or distances referred to herein are approximate only. Any information contained herein (whether in the text, plans or photographs) is given in good faith and cannot be relied upon as being a statement or representation of fact. Should you proceed with the purchase of the property, your solicitor must verify these details. We have not carried out a detailed survey nor tested the services, appliances and specific fittings. In accordance with current legislation we would advise you that the measurements on these particulars are imperial. The formula for conversion to metric is as follows: 1' (one foot) = 30.4cm (centimetres), 1m (one metre) = 3'29 (feet).

